

ARE YOU WEARING THE CORRECT SCHOOL UNIFORM?

Compulsory

- 1 Academy Blazer*
- 2 Academy Tie*
- 3 White Shirt or Blouse
- 4 Charcoal Grey Box Pleat Skirt
- 5 Charcoal Grey Trousers
- 6 Plain Black, Navy or Flesh Coloured Tights
- 7 Dark Grey, Navy, Black or White Socks
- 8 Black, Leather, Polishable Shoes



Please note - Boots may be worn in adverse weather but must be changed to suitable footwear before school.

Optional

- 1 Academy Jumper*



NOT ALLOWED

- NO tracksuit tops or hoodies
 - NO trainers, boots, canvas shoes or plimsolls
 - NO hats or caps to be worn inside the academy building
 - NO jewellery except a plain single stud for pierced ears and a watch
 - NO body studs or facial piercings, except a clear nose stud
 - NO extreme hairstyles or colours
 - NO inappropriate makeup - including false eyelashes
 - NO nail varnish - including extensions, false nails, gel acrylics and nail art
- Skirt waistbands must NOT be rolled up.

Students wearing these will be asked to remove them or be sent home to change.

ARE YOU WEARING THE CORRECT PE UNIFORM?

Compulsory

- 1 Academy Unisex PE Polo Shirt*
- 2 Academy Unisex PE Shorts* or Skort*
- 3 Shin Pads
- 4 Football / Rugby Boots - not blades



Optional

- 1 Academy Unisex PE Track Top*
- 2 Academy* or Plain Navy PE Track Bottoms
- 3 Academy* or Plain Navy PE Leggings
- 4 Plain Navy Base Layers / Skins (top and bottoms)
- 5 Academy Football Socks*



Footwear

PE Lessons:

- Trainers with Non-marking Soles
- Football Boots or AstroTurf Trainers

Dance Lessons:

- Dance Shoes
- Indoor Plimsols

Please note - Outdoor trainers or socks will not be allowed.

All items of uniform marked with a * must be purchased from the academy's accredited supplier, Monkhouse Schoolwear.

Students are expected to adopt a professional approach to their studies and the uniform code reflects this. Failure to comply with the uniform code may result in students being sent home to change or being removed from mainstream lessons.

Goodwin Academy reserves the right to decide what is considered appropriate and may take adaptations for extreme weather conditions.

Visit Monkhouse



Equipment Code

HAVE YOU GOT EVERYTHING YOU NEED?

Essential Items

- ✓ Black or blue ballpoint pen



- ✓ Pencil



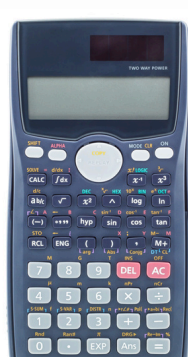
- ✓ Rubber / Eraser



- ✓ Ruler

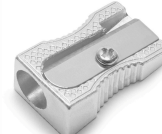


- ✓ Scientific Calculator

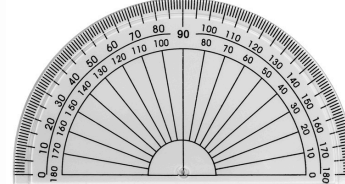


Recommended Items

- ✓ Pencil sharpener



- ✓ Protractor



- ✓ Colouring pencils



- ✓ Purple pen



Please ensure that your school bag is fit for purpose. It needs to be big enough for your schoolwork and equipment.